

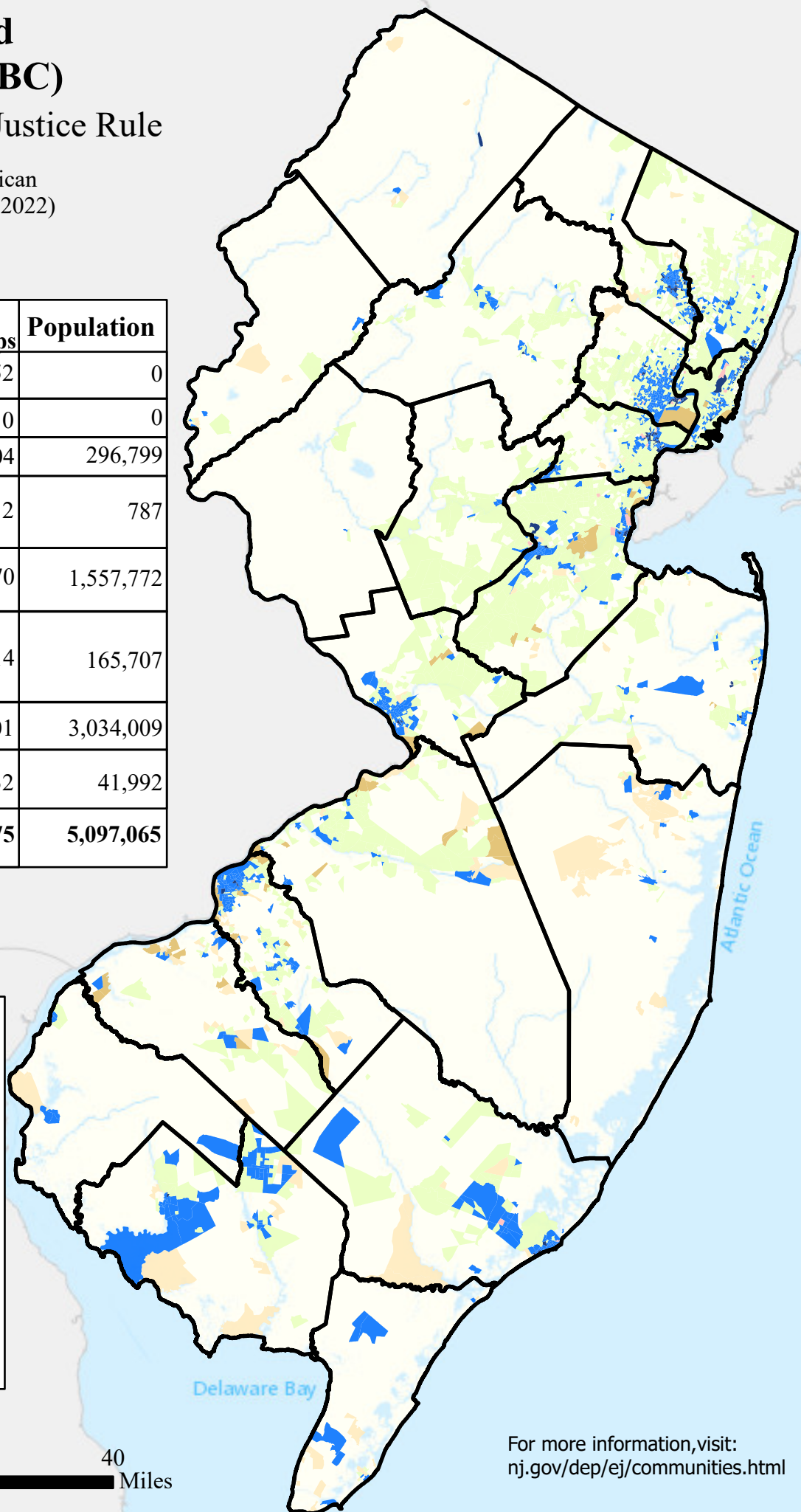
# Overburdened Communities (OBC)

## Under the Environmental Justice Rule

Data from the 5 Year American Community Survey (2018 to 2022)

Overburdened Community Criteria	Number of Block Groups	Population
Adjacent	52	0
Limited English	0	0
Low Income	204	296,799
Low Income & Limited English	2	787
Low Income & Minority	1,070	1,557,772
Low Income, Minority, & Limited English	114	165,707
Minority	2,101	3,034,009
Minority & Limited English	32	41,992
<b>Total</b>	<b>3,575</b>	<b>5,097,065</b>

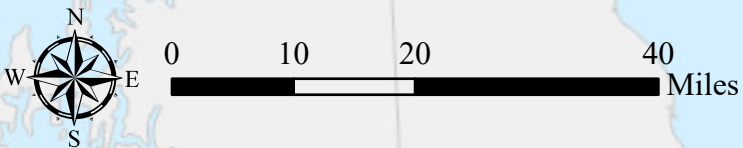
 County Boundaries



The State has updated mapping of New Jersey's OBCs, as required by the Act (see the Overburdened Communities tab above). Specifically, OBCs are block groups with:

- (1) At least 35 percent low-income households; or
- (2) At least 40 percent of the residents identify as minority or as members of a State recognized tribal community; or
- (3) At least 40 percent of the households have limited English proficiency

Census block groups with zero population and located immediately adjacent to an OBC are labeled as "adjacent." Existing or proposed facilities located in adjacent block groups may be required to conduct further analysis in accordance with the Environmental Justice Rules



For more information, visit: [nj.gov/dep/ej/communities.html](http://nj.gov/dep/ej/communities.html)